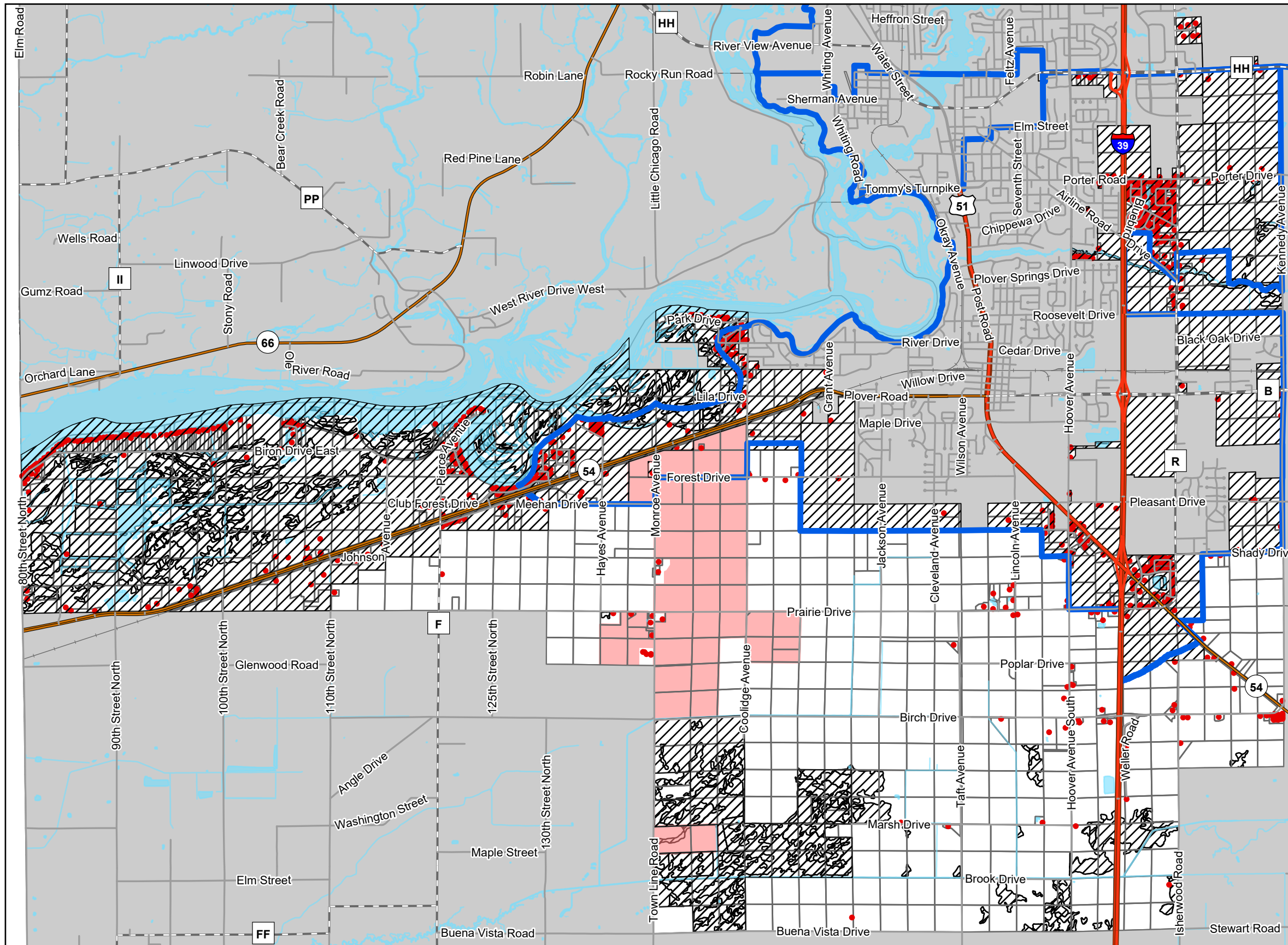





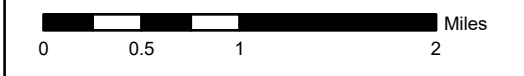


Map 8.2A
 Future Land Use Regarding
 Solar Projects 100 MW or Greater



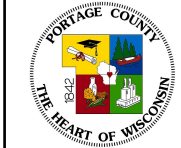
-  Areas Excluded From Solar Energy Projects
-  Potential Future Solar Area
-  Sewer Service Area Boundary
-  Existing Solar Project Boundary
-  Structure Locations



Source: Town of Plover (2023)
 Portage County Planning & Zoning (2023)

Adopted:

Town of Plover Comprehensive Plan



Portage County
 Planning & Zoning
 1462 Strongs Ave.
 Stevens Point, WI 54481